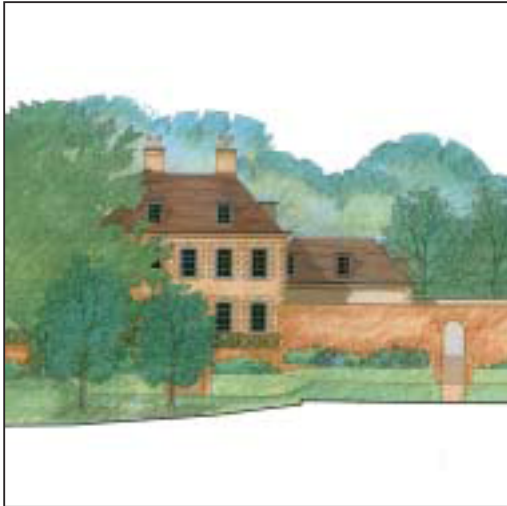




## Tythe Farm, North Newington



CONSERVATION

**RESIDENTIAL**

EDUCATION/COMMUNITY

HOTEL/LEISURE

HEALTHCARE

COMMERCIAL



Over the centuries Britain has had a tradition of building substantial country houses set in their own landscaped grounds. This tradition has been on the wane in recent years but fortunately the client at Tythe Farm was keen to revive it.

The brief was for a well-proportioned house in a Georgian style but designed for modern living and complementing the local landscape.

Acanthus Clews' plans involved demolition of a run-down farmhouse and other modern farm buildings, retention of an attractive barn and construction of the new house and a formal walled garden.

The design for the house includes a central section and a lower wing to the side, all built in local ironstone and featuring traditional sash windows with projecting stone cills and flat keystone lintels. The house and the retained barn are integrated into a courtyard.

Energy efficiency is built into the house through high levels of insulation and the use of hidden solar panels.

Planning consent was won although the plans were not in keeping with local planning policy. The deciding factor was a section of national planning policy which supports exceptional projects in rural settings where they are considered to be of the highest quality.