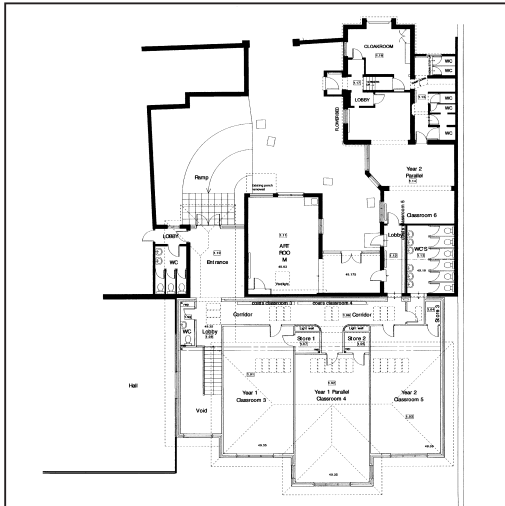


Holy Cross Preparatory School



CONSERVATION
RESIDENTIAL
EDUCATION/COMMUNITY
HOTEL/LEISURE
HEALTHCARE
COMMERCIAL

The new junior department for Holy Cross School began as a wish on the part of the school to replace some small classrooms, which were not ideally positioned, with a new facility.

Several options were considered before the design developed into an extension on two levels behind the single storey courtyard building which had been the art room. The new development provides five new classrooms with new cloakroom and wc facilities. The position on the site allows for the new department to have the benefit of its own secure entrance through a gated courtyard space. The split level extension is entered at the ground

floor level of the school and links into it at both this level and the lower ground floor level. The junior forms are grouped together and have the benefit of good connection with the rest of the school.

The development was commended by the officers of the Kingston planning department for the way in which it utilised a corner of the site with minimum impact on the conservation area. The construction is in brick under a slate roof complement in its way the fine original country house of Coombe Ridge. It was completed ready for spring Term 2001.