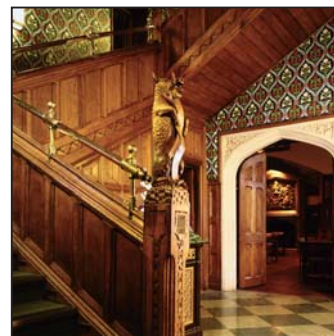
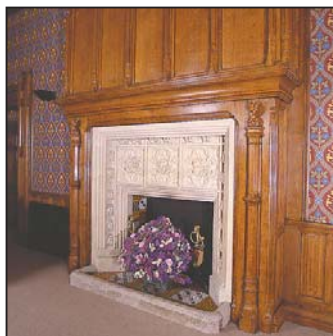




A diverse range of services for Bilton Grange School



- CONSERVATION
- RESIDENTIAL
- EDUCATION/COMMUNITY**
- HOTEL/LEISURE
- HEALTHCARE
- COMMERCIAL



Acanthus Clews have worked with Bilton Grange School near Rugby for over ten years during which time a number of projects have improved the school's facilities.

The provision of **new classrooms and changing rooms** involved the demolition and replacement of a 1970s teaching block that was subsiding, and the filling of a gap between the original building and the new block.

Dormitory modernisation and refurbishment resulted in improved individual privacy and comfort for the children. The new facility was completed to a high standard of finish and included baths, showers, washbasins and lavatories plus a new lighting scheme.

Work to the **historic A.W.N. Pugin library** primarily involved cleaning and restoring the exquisite original panelling, doors and stonework. The walls were

hung in hand painted wallpaper from an original Pugin design.

The magnificent **oak staircase** was also designed by Pugin but a hundred years' use by schoolboys had rendered it unsafe. The whole seven ton oak staircase was supported on purpose-designed scaffolding to allow a detailed structural inspection and the intricate repair work.

A **Montessori nursery** was built in just sixteen weeks, from start to finish. The scheme used a prefabricated timber frame system and Acanthus Clews adopted a two-stage tender procedure with the contractors.

A **maintenance plan** prepared by Acanthus Clews guides on-going repair and renovation work to a standard consistent with a listed building.